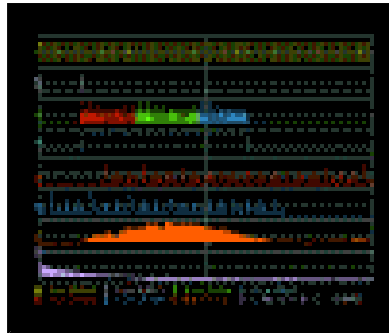


LC334A LC574A Datasheet

Leading Specifications

- 500 MHz and 1 GHz Bandwidth
- 2 GS/s and 4 GS/s Single- Shot Sample Rate
- 8 Million Points of Acquisition Memory
- 4 ms Maximum Sample Rate Window
- 96 MHz PowerPC Microprocessor
- 8 to 64 MB System RAM
- 9" Color Display with 8 Traces
- Analog Persistence
- Full Screen Grid



Digital oscilloscopes from LeCroy are designed to save engineers valuable time in troubleshooting and problem-solving.

Each oscilloscope is an integrated and powerful system providing the capability to:

- Capture the key events with high resolution for longer time intervals
- View data like never before, giving you more information more quickly, with a large, color CRT and advanced display techniques
- Analyze your signal to get answers quickly and more accurately with a powerful processing system and math packages.
- Eight trace display for a more complete picture.

9" Color Display

LeCroy provides a very large, sharp oscilloscope screen that is 50% larger in total viewing area than a 7" screen.

Its powerful features include Analog Persistence, Color-Graded Persistence, Full Screen mode, Opaque or Transparent display, color association, and personal color schemes. These provide the user with outstanding benefits that accelerate visual processing and effective communication of on-screen information.

High-Speed Acquisition

The design and debug of fast digital systems and the need to capture fast transient signals require high-speed signal capture. The LC574A four-channel, 1 GS/s, 1 GHz bandwidth DSO operates at a 4 GS/s sample rate for single-channel inputs. The high sample rate, bandwidth and the 1 GHz trigger bandwidth provide a flexible solution for capturing and viewing

fast risetime signals.

Large Sample Rate Window

Having a high sample rate in a DSO is only the first step to preserving data integrity. The time window over which this sample rate is available is also of critical importance. Long acquisition memory maintains the oscilloscope's highest sample rate for large time windows allowing the user to sample long signals with high horizontal resolution.

With up to 8 million points of acquisition memory, the maximum sample rate of the LC574AL of 4 GS/s (2 GS/s in **LC334AL**) is maintained for a time window of 2 ms (4 ms in **LC334AL**). This sample rate window enables the user to record long signals with high resolution.

Optimum Performance

SMARTMemory is a total memory management system that dynamically allocates resources of microprocessor power, acquisition memory and processing RAM. The intelligent management provided by SMARTMemory guarantees optimal usage of oscilloscope resources.

The 96 MHz PowerPC microprocessor at the heart of these DSOs drives the system to produce results fast, providing rapid waveform update and super panel responsiveness.

Quick Diagnoses

Capturing and viewing waveforms are fundamental to an oscilloscope. Productivity improvements are accessible by using built-in math functions to assist troubleshooting and diagnoses of circuit problems.

The signal analysis capability of these DSOs is enhanced by advanced waveform math, spectrum analysis, and waveform parameter analysis. This analysis capability greatly increases the speed with which circuit problems are clearly identified and solved.

Analog Persistence

At a push of the green button, the user can switch between an analog style view and a digital view of signals on these oscilloscopes.

The depth of signal information can be explored along the third dimension of the waveform display to give the user a complete picture of waveform activity.

Unlike an analog oscilloscope, all signal data is captured and available in memory for analysis and measurements. Analog Persistence gives the user the best of both the analog and digital worlds of oscilloscopes.

Full Screen Grid

LeCroy DSOs not only have a very large 9" screen but also provide a

display mode with an extra-large grid, up to 150% larger than common grid areas. In Full Screen mode, all of the screen area is used to display signals. This provides a magnificent view of up to 8 waveforms: signal details are seen more clearly and with greater ease.

8-Trace Display

An 8-trace display with any combination of math functions, zooms, reference memories, or channels is a standard feature in the LC series.

Octal grid display is available in normal and Full Screen display modes, with and without parameters displayed.

Easy Documentation

All waveform data and results of analysis can be quickly saved to floppy disk, memory card, ATA flash card, or a removable hard disk. This provides an efficient way to archive information and facilitates easy documentation of results.

An internal graphics printer (standard in "L" models) outputs screen dumps in seconds providing the user with an immediate and clear record of signal activity.

Signal Capture

Acquisition System

LC334A Bandwidth (-3 dB): @ 50 ohm: DC to 500 MHz

LC574A Bandwidth (-3 dB): @ 50 ohm: DC to 1 GHz

Bandwidth (-3 dB): @ 1 Mohm: DC to 500 MHz typical at probe tip with optional 1 GHz FET probe for LC334A and with PP005 standard with LC374A and LC574A.

No. of Channels: 4

No. of Digitizers: 4

Max. Sample Rate Window:

4 ms @ 2 GS/s in single-shot mode; **LC334AL**.
2 ms @ 4 GS/s; **LC574AL**.

Sensitivity LC334A:

2 mV/div to 5 V/div, 50 ohm, fully variable.
2 mV/div to 5 V/div, 1 Mohm, fully variable.

Sensitivity LC574A:

2 mV/div to 1 V/div, 50 ohm, fully variable.
2 mV/div to 10 V/div, 1 Mohm, fully variable.

Scale factors: A wide choice of probe attenuation factors are selectable.

Offset Range LC334A:

2.00 - 9.99 mV/div: ± 120 mV
10.0 - 199 mV/div: ± 1.2 V
0.2 - 5.0 V/div: ± 24 V

Offset Range LC574A:

2.00 - 4.99 mV/div: ± 400 mV
5.00 - 99 mV/div: ± 1 V
0.1 - 1.0 V/div: ± 10 V
1.0 - 10 V/div: ± 100 V
(1 Mohm only)

DC Accuracy: Typical 1%

Vertical Resolution: 8 bits

Bandwidth Limiter LC334A: 30 MHz

Bandwidth Limiter LC574A: 25 MHz, 200 MHz

Input Coupling: AC, DC, GND

Input Impedance: 10 Mohm//15 pF for LC334A (system capacitance using PP005), 10 Mohm//11 pF for LC374A/LC574A (system capacitance using PP005) or 50 ohm $\pm 1\%$.

Max Input:

50 ohm: ± 5 V DC (500 mW) or 5 V RMS
1 Mohm on LC334A: 250 V
1 Mohm on LC574A: 400 V (DC + peak AC ≤ 10 kHz)

SMARTMemory: This total memory management system dynamically manages acquisition memory to guarantee that signals are always sampled at the highest possible sample rate and that system RAM and microprocessor resources are always optimally employed.

Acquisition Modes

Random Interleaved Sampling (RIS): For repetitive signals from 1 ns/div to 5 μ s/div (2 μ s/div for LC574A).

Single shot: For transient and repetitive signals from 10 ns/div (1 ns/div for LC574A) with all channels active.

Peak detect: At 400 MS/s, peak detect can capture high-speed events

down to 1 ns, while simultaneously capturing normally sampled data.

Sequence: Stores multiple events - each of them time stamped - in segmented acquisition memories.

Dead Time between segments: Typically <30 μ s, max. 50 μ s

Timebase System

Timebases: Main and up to 4 Zoom Traces

Time/Div Range: 1 ns/div to 1,000 s/div.

Clock Accuracy: ≤ 10 ppm

Interpolator resolution: 10 ps

Roll Mode: Ranges 500 ms to 1,000 s/div. For >50 kpoints: 10 s to 1,000 s/div.

External Clock: ≤ 100 MHz (20-100 MHz for LC574A and LC374A) on EXT input with ECL, TTL or zero crossing levels. Optional 50 MHz to 500 MHz rear-panel fixed frequency clock input.

External Reference: Optional 10 MHz rear-panel input.

Additional Information

Interfacing

Remote Control: Possible by GPIB and RS-232-C for all front-panel controls, as well as all internal functions.

RS-232-C Port: Asynchronous up to 115.2 Kb/s for computer/terminal control or printer/plotter connection.

GPIB Port: Configurable as talker/listener for computer control and fast data transfer, up to 300 kbytes/sec. Command Language complies with requirements of IEEE-488.2.

Centronics Port: Hardcopy parallel interface is standard.

PC Card (PCMCIA I/II/III) Ports: For memory cards, ATA compatible flash cards and removable hard disks - optional.

Floppy Disk: High-density 3.5" floppy disk drive (DOS format) is standard.

VGA Compatible Display: 15-pin D-type VGA compatible connector for external color display.

Hardcopy: Screen dumps are activated by a front-panel button or via

remote control. TIFF and BMP formats are available for importing to desktop publishing programs. The following printers and plotters can be used to make hardcopies:

B/W: HP LaserJet, HP DeskJet 500, Epson FX.

Color: HP DeskJet 550C, Epson Stylus, Canon BJC. An optional, internal, high-resolution graphics printer is also available for screen dumps; a stripchart output format with 2 meters per division is also possible.

Output Formats: ASCII waveform output is available in seconds, compatible with spreadsheets, MATLAB, MathCad. Binary output is also available.

General

Auto-calibration ensures specified DC and timing accuracy.

Temperature: 5° to 40°C (41° to 104°F) rated 0° to 50°C (32° to 122° F) operating.

Humidity: 80% for temperatures up to 31°C decreasing linearly to 50% relative humidity at 40°C.

Altitude: Up to 2000m (operating), 40°C max.

Power: 90-132 V AC, 180-250 V AC, 45-66 Hz, 400 W.

Battery Backup: Front-panel settings maintained for two years.

Dimensions:

(HWD)10.4" x 15.65" x 17.85" (264 mm x 397 mm x 453 mm)

Weight: 20 kg (44 lbs) net, 28 kg (61.6 lbs) shipping.

Warranty: Three years.

CE Approval: EMC: Conforms to EN50081-1 and EN50082-1.

UL and cUL approved: UL standard: UL 3111-1; cUL Canadian Standard CSA-C22.2 No. 1010. 1-92.

Safety: The oscilloscope has been designed to comply with EN61010-1 Installation Category (Over-voltage Category) II, Pollution Degree 2.

Signal Viewing

Type: Color 9" Raster Scan CRT, 0.26 mm dot pitch.

Resolution: 640 x 480 points.

Display Area: 170 mm x 125 mm - 50% greater than that of a 7" display.

Controls: Rear-panel presets for position, brightness and contrast. Menu controls for brightness and color selection.

Grid Styles: Single, Dual, Quad, Octal, XY, Single+XY, Dual+XY, and Full Screen - an enlarged view of each grid style.

Graticules: Internally generated; separate intensity control for grids and waveforms. Selectable blending of grid with displayed traces.

Waveform Style: Dot Join with option-al sample point highlight or Dots only.

Persistence Modes: Color-graded per-sistence and Analog Persistence, infinite or variable with decay over time. In color-graded persistence, a color spectrum from red through violet is used to map signal intensity. With Analog Persistence, the brightness level of a single color denotes signal intensity. Each trace's persistence data is stored in 64 k levels. Analog Persistence is only available in four channel mode on LC334A models.

Trace Display: Opaque or transparent mode, with overlap management.

Number of Traces: 8 (any mix of channels, memories or Math functions).

Real-time Clock: Date, hours, minutes, seconds.

External Monitor: Rear-panel 15-pin socket for VGA compatible monitor.

Vertical Zoom: Up to 5x vertical expansion (50x with averaging, up to 40 $\mu\text{V}/\text{div}$ sensitivity).

Horizontal Zoom:

LC334A: Waveforms can be expanded to give 2-2.5 points/division. This allows zoom factors up to 100,000x for the 'M' models and up to 400,000x for the 'L' models when channels are combined.

LC574A: Waveforms can be expanded to give 0.4-0.5 points per division. Zoom factors up to 2,000,000x with all channels combined on the LC574AL.

Triggering System

Modes: Normal, Auto, Single, and Stop.

Sources: CH1, CH2, CH3, CH4, Line, EXT, EXT/10. Slope, Level and Coupling are unique to each source.

Slope: Positive, Negative.

Coupling: AC, DC, HF, LFREJ, HFREJ

Pre-trigger recording: 0 to 100% of full scale (adjustable in 1% increments).

Post-trigger delay: 0 to 10,000 divisions (adjustable in 0.1 div. increments).

Holdoff by time: 10 ns to 20 s

Holdoff by events: 0 to 99,999,999

Internal Trigger Range: ± 5 div

EXT Trigger Max Input LC334A:

10 Mohm//15 pF
(system capacitance using PP005):
50 V (DC + peak AC ≤ 10 kHz)

50 ohm $\pm 1\%$: ± 5 V DC (500 mW) or 5 V RMS.

EXT Trigger Max Input LC574A:

10 Mohm//11 pF
(system capacitance using PP005):
400 V (DC + peak AC ≤ 10 kHz)

50 ohm $\pm 1\%$: ± 5 V DC (500 mW) or 5 V RMS.

EXT Trigger Range: ± 0.5 V (± 5 V with Ext/10).

Trigger Timing: Trigger Date and Time are listed in the Memory Status Menu.

Trigger Comparator: Optional ECL rear-panel output. Alternatively, the calibrator output can provide a trigger output or a Pass/Fail test output.

SMART Trigger Types

Pattern: Trigger on the logic combination of 5 inputs - CH1, CH2, CH3, CH4, and EXT Trigger, where each source can be defined as High, Low or Don't Care. The Trigger can be defined as the beginning or end of the specified pattern.

Signal or Pattern Width: Trigger on width between two limits selectable from < 2.5 ns to 20 s. Will typically trigger on glitches 1 ns wide.

Signal or Pattern Interval: Trigger on interval between two limits selectable from 10 ns to 20 s.

Dropout: Trigger if the input signal drops out for longer than a time-out

from 25 ns to 20 s.

State/Edge Qualified: Trigger on any source only if a given state (or transition) has occurred on another source. The delay between these events can be defined as a number of events on the trigger channel or as a time interval.

TV: Allows selection of both line (up to 1500) and field number (up to 8) for PAL (SECAM), NTSC or nonstandard video.

Exclusion Trigger: Trigger on inter-mittent faults by specifying the normal width or period of a signal. The oscillo-scope will trigger only on aberrations which are shorter or longer than normal.

Autosetup

Pressing Autosetup sets timebase, trigger and sensitivity to display a wide range of repetitive signals, (Frequency above 50 Hz; Duty Cycle greater than 0.1%).

Autosetup Time: Approximately 2 seconds.

Vertical Find: Automatically sets sensitivity and offset for selected channel.

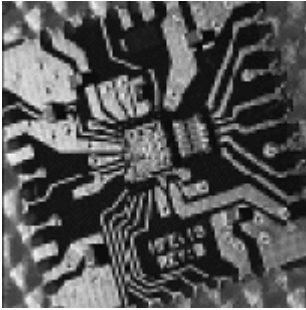
Probes

One PP005 probe is supplied per channel. DC to 500 MHz typical (350 MHz typical for LC334A) at probe tip, 500 V max.

Probe calibration: Max 1 V into 1 Mohm, 500 mV into 50 ohm, frequency and amplitude programmable, pulse or square wave selectable, rise and falltime 1 ns typical. Alternatively, the calibrator output can provide a trigger output or a Pass/Fail test output.

Maximum Sample Rate and Acquisition Memories

	Maximum Sample Rate		Memory Per Channel			
Channel Use	LC334A	LC574A	LC334A LC574A	LC334AM LC574AM	LC334AL LC574AL	Active Channels
All Peak Detect OFF	500 MS/s	1 GS/s	100k	500k	2 M	All
Paired Peak Detect OFF	1 GS/s	2 GS/s	250k	1 M	4 M	Ch 2 & Ch 3
Paired + Adapter Peak Detect OFF	2 GS/s	4 GS/s	500k	2 M	8 M	One
All Peak Detect ON	100 MS/s data + 400 MS/s peaks		50k data + 50k Peaks	250k data + 250k peaks	1 M data + 1 M peaks	All



High performance signal conditioning devices preserve signal content.

Cursor Measurements

Relative Time: A pair of arrow cursors measure time differences and voltage differences relative to each other.

Relative Voltage: A pair of line cursors measure voltage differences.

Absolute Time: A cross-hair marker measures time relative to the trigger and voltage with respect to ground.

Absolute Voltage: A reference bar measures voltage with respect to ground.

Automated Measurements

A wide range of pulse parameter measurements are available. These are categorized for ease of use. The categories include Pulse, Horizontal, and Vertical parameters. Basic statistical measurements (average, highest, lowest, and standard deviation), can be made on these parameter values in order to understand their distribution. Pass/Fail Testing and Waveform Limit testing using masks can be performed. Test conditions can be expressed as either waveform parameter limits, waveform shape limits (mask) or a combination of both. Any failure can cause preprogrammed actions such as Hardcopy, Save, GPIB service request, logic pulse out, audible beep, or any combination of the above.

Number of segments available

Model		Segments
LC334A	LC574A	500
LC334AM	LC574AM	2,000
LC334AL	LC574AL	2,000

Signal Analysis

A comprehensive and easy-to-use set of diagnostic tools are available. Calculations are performed rapidly, and results can be presented on-screen or stored to disk.

Rapid Processing System

Microprocessor: 96 MHz PowerPC 603e.

System RAM: 8 to 64 Mbytes.

Video Memory: 1 Mbyte.

Cache Memory: 32 kbyte.

Persistence Data Map Memory: 16 bits per displayed pixel (64 k levels).

Waveform Processing

Up to four processing functions may be performed simultaneously. Standard functions available are: Add, Subtract, Multiply, Divide, Negate, Identity, Summation Averaging and Sine x/x. The source information for a math function trace can be data from an acquisition channel or from another math function trace. This allows display of traces which "daisy chain" math functions.

Average: Up to 10^6 averages are possible.

Extrema: Roof, Floor, or Envelope values from 1 to 10^6 sweeps.

ERES: Six low-pass digital filters provide up to 11-bit vertical resolution. Sampled data is always available, even when a trace is turned off.

FFT: Spectrum Analysis with five windowing functions and FFT averaging.

Statistical Diagnostics*: The Parameter Analysis package permits in-depth diagnostics on waveform parameters. Live histogramming of any waveform parameter measurement is possible and the histogram can be autoscaled to display the center and width of the distribution.

Any of the above processes can be invoked without losing the data.

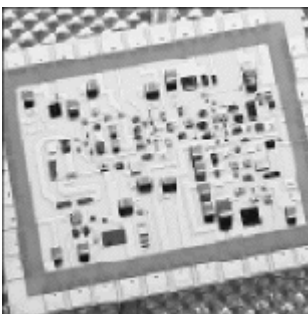
*Histogramming and Trending are part of the Parameter Analysis Package.

Internal Memory

Waveform Memory: Up to four 16-bit Memories (M1, M2, M3, M4), whose length corresponds to the length of the channel acquisition memory.

Zoom & Math Memory: Up to four 16-bit Waveform Processing Memories (A, B, C, D), whose length corresponds to the length of the channel acquisition memory.

Setup Memory: Four non-volatile memories. The floppy disk or optional memory cards, Flash card or removable hard disks can also be used for high-capacity waveform and setup storage.



Precision sampling devices maintain signal integrity in the digital

world .System Memory Configurations

Maximum Horizontal Zoom Factors

Model	Zoom Factors
LC334	4,000x
LC334AM LC574A	20,000x
LC334AL LC574AM	100,000x
LC574AL	400,000x

Ordering Information

[To request a Quote or Demo on any of the following models, click here.](#)

Digital Oscilloscopes:

	Product Code
500 MHz, 500 MS/s, 100 kpts./ch, 4 channel Color DSO	LC334A
500 MHz, 500 MS/s, 500 kpts./ch, 4 channel Color DSO	LC334AM
500 MHz, 500 MS/s, 2 Mpts./ch, 4 channel Color DSO	LC334AL
1 GHz, 1 GS/s, 100 kpts./ch, 4 channel Color DSO	LC574A*
1 GHz, 1 GS/s, 500 kpts./ch, 4 channel Color DSO	LC574AM*
1 GHz, 1 GS/s, 2 Mpts./ch, 4 channel Color DSO	LC574AL*
Included with Standard Configuration:	
10:1 10 Mohm Passive Probe (1 per channel)	PP005
Operator's Manual	LCXXX-OM
Remote Control Manual	LCXXX-RCM
Hands On Guide	LCXXX-HG
Advanced Waveform Math Package	WP01
Spectrum Analysis Package	WP02
Floppy Disk Drive	FD01
Performance Certificate	
Three-Year Warranty	

Probes & Accessories:

1 GHz 10:1 FET Probe	AP020
800 MHz 5:1 FET Probe	AP021
2.5 GHz 0.6pF Active Probe	AP022
1 GHz, 10:1, 500 ohm Passive Probe	PP062
ProBus 75 ohm to 50 ohm Adapter	PP090

Software Options:

Parameter Analysis Package (includes Histogramming and Trending)	WP03
Disk Drive Measurements	DDM
Supplementary Disk Drive Measurements	PRML
Optical Recording Measurements	ORM

Hardware Options:

Memory Card Reader and 512k SRAM Card	MC01/04
PCMCIA Type III Slot for Hard Drives and ATA Flash Cards	HD01
PCMCIA Hard Disk 170 Mbyte (requires HD01 option)	HD02
4MB ATA Flash Card (requires HD01 option)	4MBFC
Internal Graphics Printer	GP01**
500 MHz Ext Clock, 10 MHz Ref Input, Trigger Comparator Output	CKTRIG
64 Mbyte System Memory	64MBSM**

Manuals:

Service Manual for LCXXXA	LCXXX-SM
---------------------------	----------

Warranty & Calibration:

US Military Standard	LCXXX- CCMIL
US NIST Standard	LCXXX- CCNIST

* Includes Internal Graphics Printer and Parameter Analysis Package

** Included with LC574AL